

Hybrid Resource Load Management: Skill-Based Leveling with Individual Tracking

Preferred Scenario:

- Always Level Resource Assignments on Skill
- Resources with individual Calendars

FAQ: What explains the **Blue Line** moving up (peaks) or down in the **Resource Load Diagram**, when resources have different calendars?

Scenario Settings

Space Properties and Skill Setting

Allways level resource assignments on skill

- When selected, resource levelling takes place on the skill. The scheduler will select resources for normal skill's but these resources do not impact levelling

When choosing this Scenario?

When there is a strong preference to execute the scheduling and leveling at Skill Availability Level, and avoid this is done at individual resource level.

But at the same time, it is relevant for e.g. Resource Managers to track the resource load of their resources, as they are assigned to tasks.

LYNX has the capability to support both objectives.

The screenshot shows the 'Skills' configuration window for a skill named 'system tester'. The window has several tabs: 'General', 'Scheduling', 'Output', 'Properties', 'Team managers', 'Financial', and 'Resources'. The 'Scheduling' tab is selected. The main content area is titled 'How do you want the scheduler to handle this skill' and contains the following sections:

- Multi-project resource leveling**: This setting controls how Lynx will synchronize projects when conflicts exists between tasks requiring the same skill:
 - Resolve conflicts across all projects use this setting for virtual drum resources/capacity constraint resources
 - Resolve conflicts within projects, allow conflicts between projects
- Skill type**: This setting controls how Lynx selects resources to work on a task:
 - Normal: resources are assigned from the list of resources supporting this skill
 - Virtual: no resources are assigned, availability is set under 'Skill availability'
 - Team: resources are assigned as a team. Use 'Skill availability' to set the number of teams available
 - Global: global skills are placeholders for properties shared among skills
- Skill availability** (this skill is supported by 4 resource(s), total netto availability is: 3,5 unit(s))
Availability for this skill is set to:
 - Availability is controlled by the number of resources implementing this skill
 - Set availability for this skill to: [input field] [Edit] [Clear]
- Skill calendar**: Standard [dropdown] [New] [Edit]

At the bottom of the window are 'OK' and 'Close' buttons.

As Leveling is driven by **Skill Availability**, also a **“Leading” Skill Calendar must be selected**. In this case the **Standard Calendar** is selected.



Example 1

Skill System Tester:

- 4 Resources / 4FTE
- 2 Calendars

Example 1:

Skill System Tester with 4 Resources(4FTE) & 2 Calendars

In this example there are 4 System Testers (David, Eric, Steve and Tom), where David and Eric have the “Singapore” Calendar and Tom and Steve have the “Standard Calendar”.

Differences in availability occur during the X-mass period, as the Standard Calendar has 3 Non-Working days and the Singapore Calendar has 1 Non-Working day.

Calendar	Name	Net Avail.	Hours p/wk
Singapore	David	100%	40
	Eric	100%	40
Standard	Steve	100%	40
	Tom	100%	40
	Total	400 % (= 4FTE)	160 h (= 100 %)

December 2025

Mon	Tue	Wed	Thu	Fri	Sat	Sun
1 8:00	2 8:00	3 8:00	4 8:00	5 8:00	6 0:00	7 0:00
8 8:00	9 8:00	10 8:00	11 8:00	12 8:00	13 0:00	14 0:00
15 8:00	16 8:00	17 8:00	18 8:00	19 8:00	20 0:00	21 0:00
22 8:00	23 8:00	24 8:00	25 0:00	26 8:00	27 0:00	28 0:00
29 8:00	30 8:00	31 8:00				

Buttons: Add rule, Edit rule, Delete rule, Working hours

Show: Rules per date, All rules

Rule description: Rules for calendar 'Standard'

- Resources are normally working between 9:00 and 17:00
- Resources are not working on Sunday
- Resources are not working on Saturday
- Resources are not working on every December 24th
- Resources are not working on every December 25th
- Resources are not working on every December 26th

Rules for calendar 'Singapore'

- Resources are working on every December 24th
- Resources are working on every December 26th

Resource editor [David Pan]

Ref. Description: DP David Pan

Properties: Assignments, Financial, User, Availability schedule, Skills, Property values

Set general properties for this resource

Description: David Pan, Reference: DP, 110996

Resource manager: A-dato Consulting, A-dato

Calendar: Singapore

Active resource?

Netto availability (%): 100

Available from: Sunday, 26 October 2025

Available till: Sunday, 26 October 2025

Comments:

Buttons: OK, Apply, Close

Calendar	Non Working Days
Standard	24, 25 & 26 December
Singapore	25 December

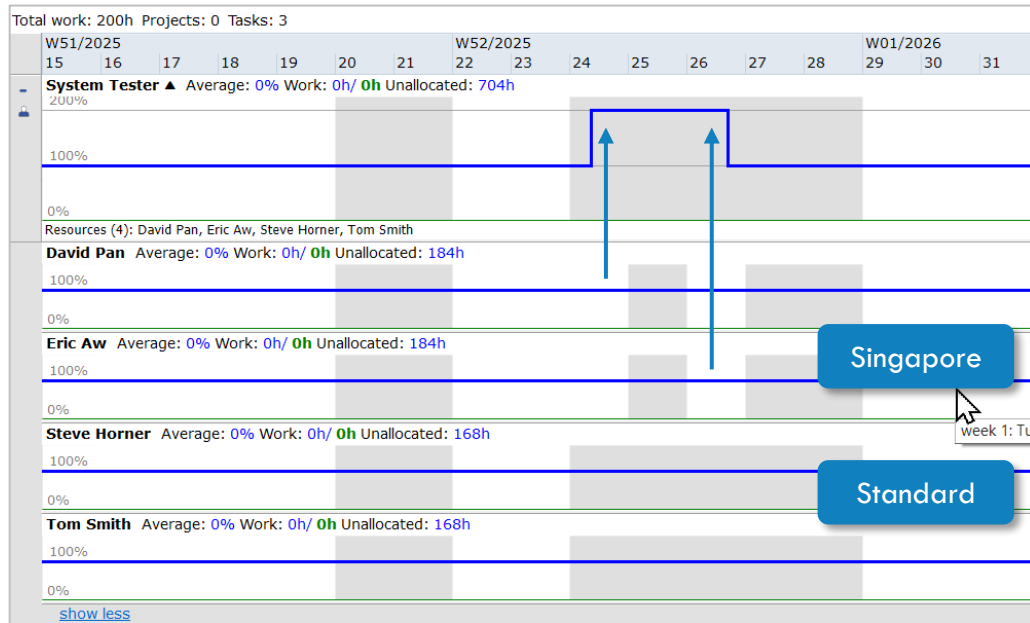
Understanding the Resource Load Diagram

LYNX shows for 24 and 26 December an availability of 200 %:

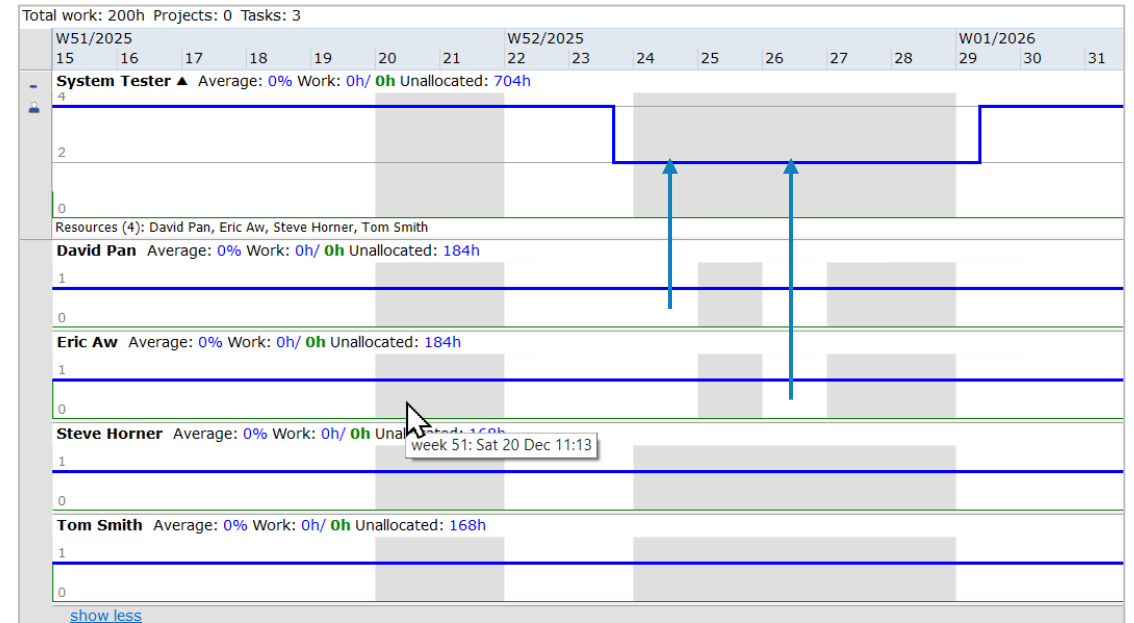
- According to the **Standard Calendar** there is **0 % availability**
- However as 2 FTE in Singapore are available on both days, representing a **200 % availability** offset against the Standard Calendar

LYNX shows for 24 and 26 December an availability of 2 FTE:

- Tom and Steve are not available, as they have the Standard Calendar
- David and Eric are available on both days (= 2 FTE), as they have the Singapore Calendar



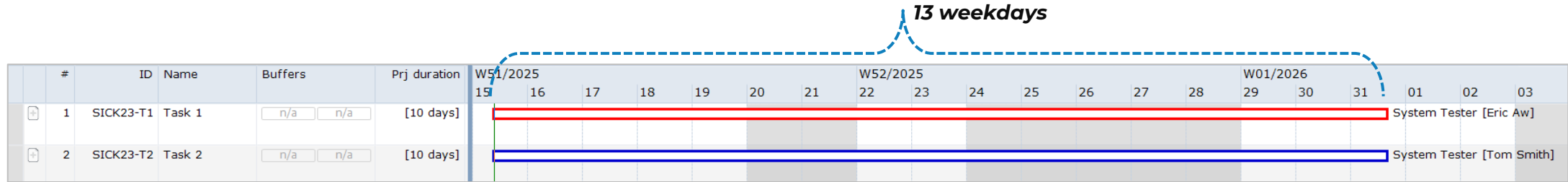
Show Resource Load as **Percentage** of Total Availability



Show Resource Load Using **Absolute Values**

Understanding the Resource Load Diagram

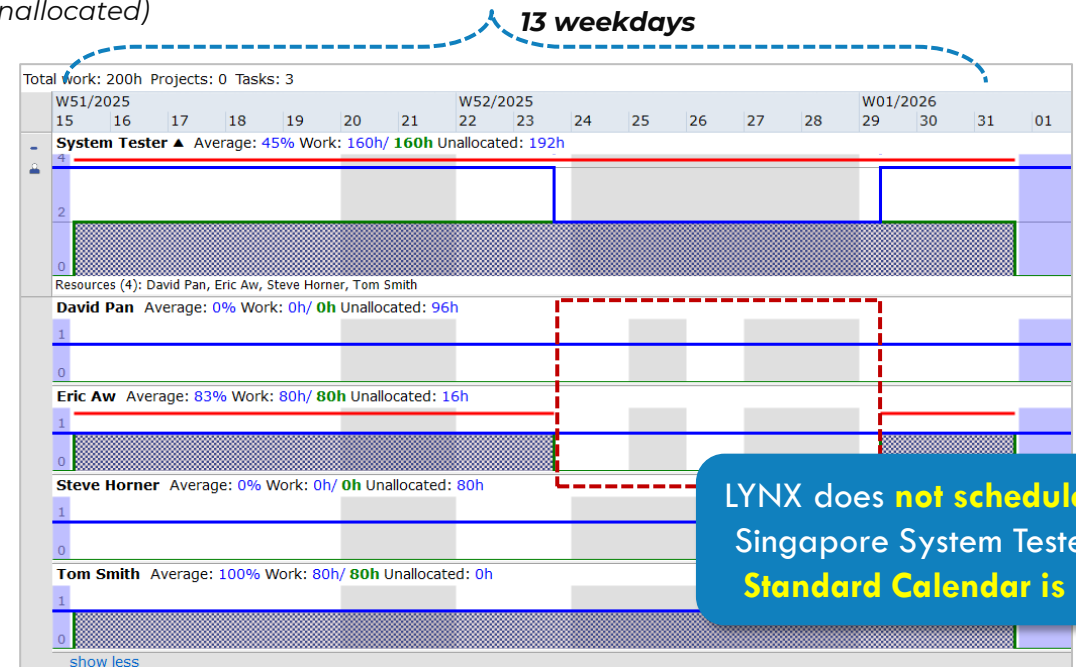
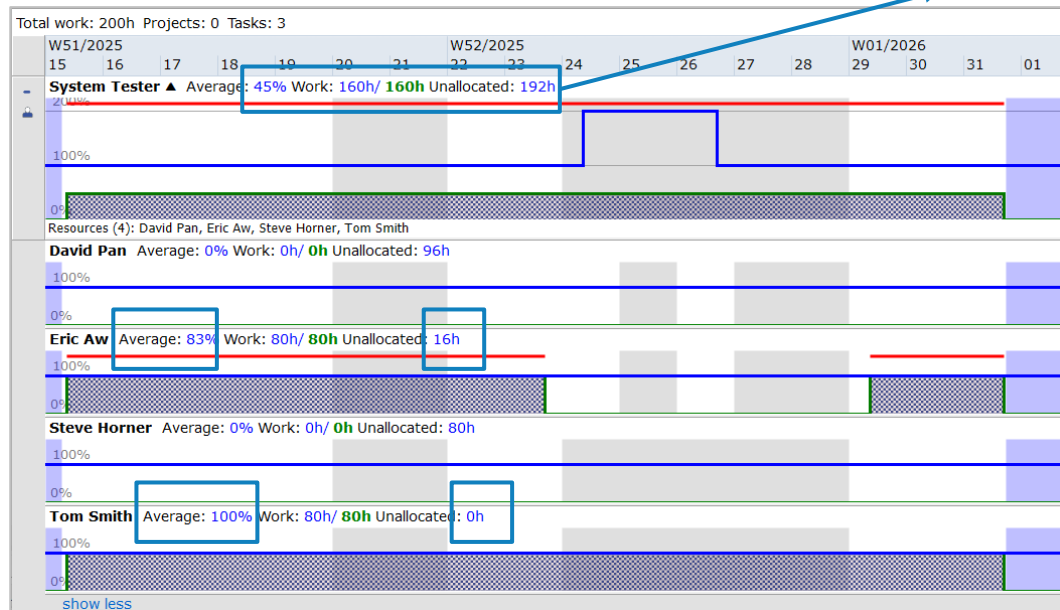
Load Diagram Calculation Window: 15/12 – 31/12 (13 weekdays)



Explanation:

- 10 workdays spans a 13 weekdays window, as 24, 25 and 26 December are not available
- Average Load for Tom during this window **100 %** as he has the Standard Calendar (he has 80 hours available during the 13 days window)
- Average for Eric is **83 %** (= 80/-96), as he has 12 days / 96 hours available, for delivering the same 10 workdays / 80 hours = **16 hours more!**

Total Availability within 13 days window = **352 hours** (160 allocated (45 %) + 192 Unallocated)
 (Steve (80) + Tom (80) + David (96) + Erik (96))



LYNX does **not schedule** Tasks for Singapore System Testers, as the **Standard Calendar is Leading!**



Example 2

Skill System Tester:

- 4 Resources / 3,5FTE
- 2 Calendars

Example 2:

Skill System Tester with 4 Resources(3,5 FTE) & 2 Calendars

Calendar	Name	Net Avail.	Hours p/wk
Singapore	David	100%	40
	Eric	100%	40
Standard	Steve	50%	20
	Tom	100%	40
Total		350 % (= 3,5 FTE)	140 h (= 100 %)

Resource editor [Steve Horner]

steve

Ref.	Description
SH	Steve Horner

Properties Assignments Financial User Availability schedule Skills Property values

Set general properties for this resource

A calendar controls the availability for this resource

Description: Steve Horner Reference: SH 15735

Resource manager: Sven Cramer

Calendar: Standard

Active resource?

Netto availability (%): 50 Temporary worker?

Available from: Monday, 15 December 2025 Available till: Monday, 15 December 2025

Comments

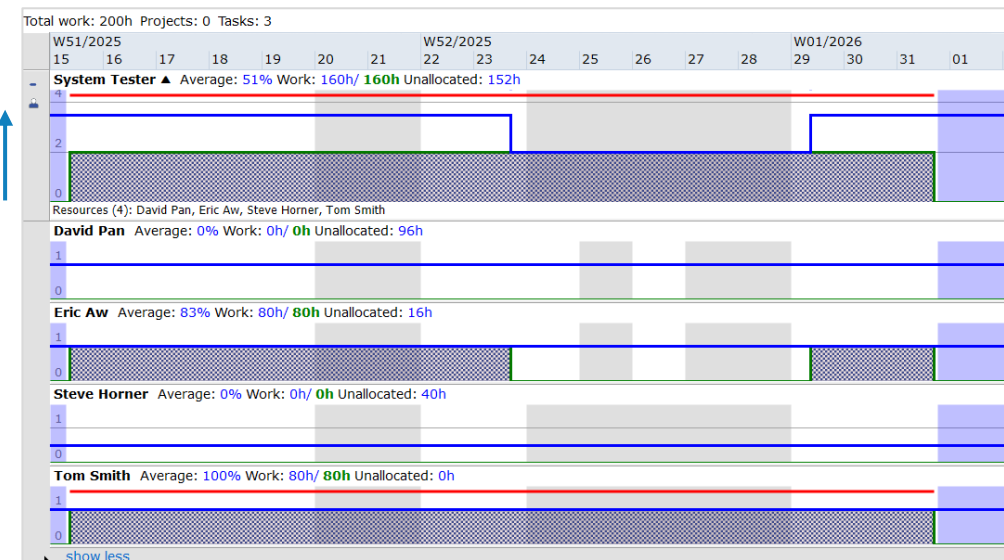
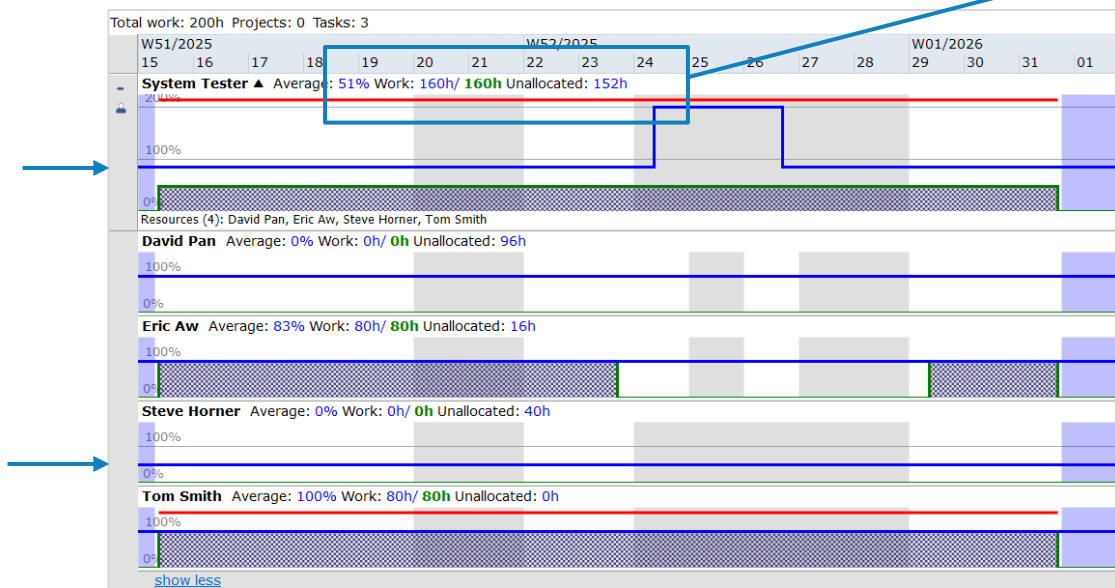
OK Apply Close

Understanding the Resource Load Diagram

Load Diagram Calculation Window: 15/12 – 31/12 (13 weekdays)

#	ID	Name	Buffers	Prj duration	W51/2025	W52/2025	W01/2026																	
					15	16	17	18	19	20	21	22	23	24	25	26	27	28	29	30	31	01	02	03
1	SICK23-T1	Task 1	n/a	[10 days]	[Red bar]													System Tester [Eric Aw]						
2	SICK23-T2	Task 2	n/a	[10 days]	[Blue bar]													System Tester [Tom Smith]						

Total Availability within 13 days window = **312 hours** (160 allocated (**51 %**) + 152 Unallocated)
 (Steve (40) + Tom (80) + David (96) + Erik (96))



Thank You



 **Address**

Professor Snijdersstraat 2, 2628 RA Delft

 **Telephone**

+31 756409222

 **Website**

www.a-dato.com

