

INSERTING BUFFERS

Two step process

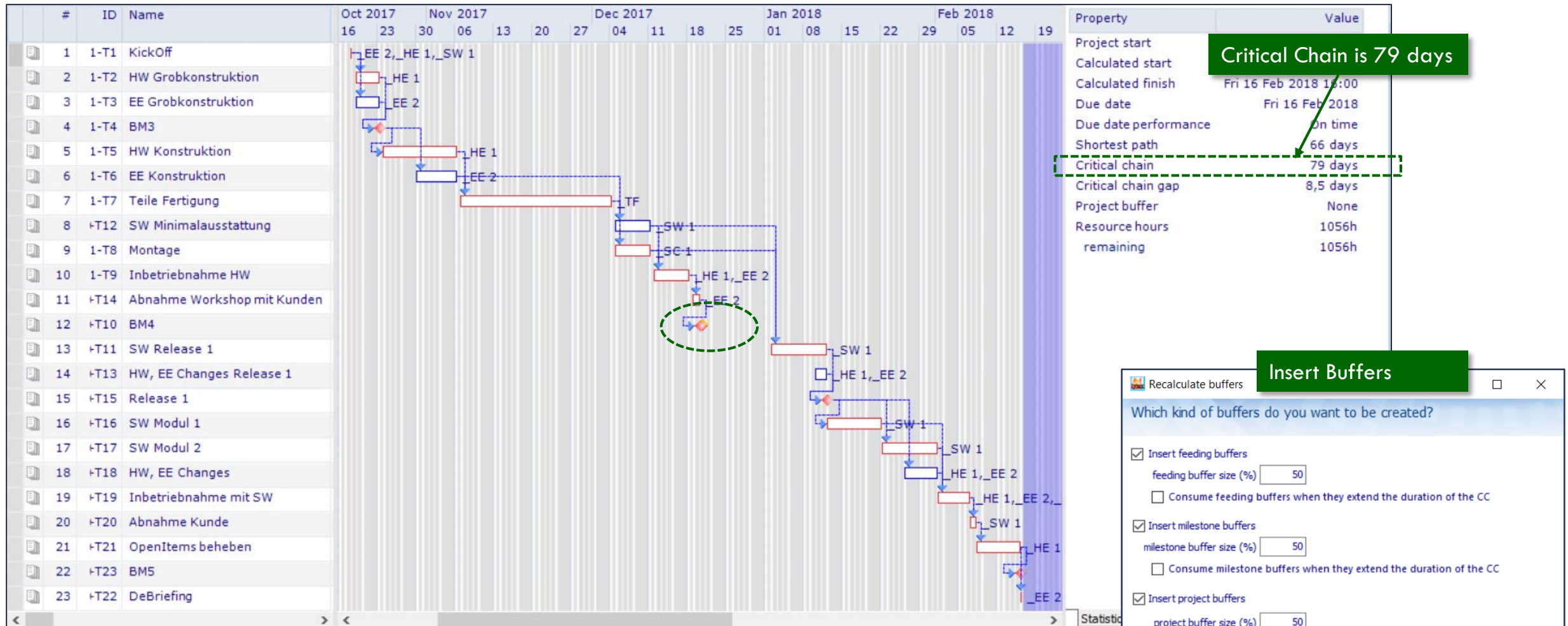
A-dato

High Performance Delivered

CCPM Project

before inserting Buffers

2



Critical Chain is 79 days

Insert Buffers

Recalculate buffers

Which kind of buffers do you want to be created?

- Insert feeding buffers
 - feeding buffer size (%)
 - Consume feeding buffers when they extend the duration of the CC
- Insert milestone buffers
 - milestone buffer size (%)
 - Consume milestone buffers when they extend the duration of the CC
- Insert project buffers
 - project buffer size (%)

OK Cancel

Inserting buffer changes the Critical Chain

3

The new duration of the Critical Chain is 72 days in stead of 79 days

The Project Buffer size is set at 50 % of the 79 days = 40 days.

Inserting the project buffer changed the critical chain. Feeding buffers and/or milestone buffers have not been inserted. Please verify the validity of the current critical chain, then use 'insert buffers' again to also add feeding- and/or milestonebuffers.

Property	Value
Project start	Today
Calculated start	Thu 14 Sep 8:00
Calculated finish	Fri 22 Dec 16:00
Due date	Fri 16 Feb 2018
Due date performance	On time
Shortest path	66 days
Critical chain	72 days
Critical chain gap	
Project buffer	40 days
Resource hours	1056h
remaining	1056h

#	ID	Name	Oct 2017	Nov 2017	Dec 2017	Jan 2018	Feb 2018										
			16	23	30	06	13	20	27	04	11	18	25	02	09	16	23
2	CUEN01-T2	HW Grobkonstruktion															
3	CUEN01-T3	EE Grobkonstruktion															
4	CUEN01-T4	BM3															
5	CUEN01-T5	HW Konstruktion															
6	CUEN01-T6	EE Konstruktion															
7	CUEN01-T7	Teile Fertigung															
8	CUEN01-T12	SW Minimalausstattung															
9	CUEN01-T8	Montage															
10	CUEN01-T9	Inbetriebnahme HW															
11	CUEN01-T14	Abnahme Workshop mit Kunden															
12	CUEN01-T10	BM4															
13	CUEN01-T11	SW Release 1															
14	CUEN01-T13	HW, EE Changes Release 1															
15	CUEN01-T15	Release 1															

Add Feeding and Milestone buffer(s)

4

Select CCPM Property Box again!

The screenshot displays a project management software interface. On the left, a task list table is visible:

#	ID	Name
2	CUEN01-T2	HW Grobkonstruktion
3	CUEN01-T3	EE Grobkonstruktion
4	CUEN01-T4	BM3
5	CUEN01-T5	HW Konstruktion
6	CUEN01-T6	EE Konstruktion
7	CUEN01-T7	Teile Fertigung
8	CUEN01-T12	SW Minimalausstattung
9	CUEN01-T8	Montage
10	CUEN01-T9	Inbetriebnahme HW
11	CUEN01-T14	Abnahme Workshop mit Ku
12	CUEN01-T10	BM4
13	CUEN01-T11	SW Release 1
14	CUEN01-T13	HW, EE Changes Release 1
15	CUEN01-T15	Release 1
16	CUEN01-T16	SW Modul 1
17	CUEN01-T17	SW 1
18	CUEN01-T18	HE 1,_EE 2
19	CUEN01-T19	HE 1,_EE 2,_SW 1
20	CUEN01-T20	SW 1
21	CUEN01-T21	OpenItems beheben
22	CUEN01-T23	BMS
23	CUEN01-T22	DeBriefing
24		Project buffer

In the center, a dialog box titled "Recalculate buffers" is open, asking "Which kind of buffers do you want to be created?". It has three checked options: "Insert feeding buffers" (50%), "Insert milestone buffers" (50%), and "Insert project buffers" (50%). A green dashed circle highlights the "Insert project buffers" checkbox. A note below the dialog says: "A project buffer already exists. Checking this option will reevaluate the size and dependencies of the existing project buffer." Buttons for "OK" and "Cancel" are at the bottom.

On the right, a "CCPM" property table is shown:

Property	Value
Project start	Today
Calculated start	Thu 14 Sep 8:00
Calculated finish	Fri 22 Dec 16:00
Due date	Fri 16 Feb 2018
Due date performance	On time
Shortest path	66 days
Critical chain	72 days
Critical chain gap	
Project buffer	40 days
Resource hours	1056h
Resource hours remaining	1056h

Below the dialog box, a Gantt chart shows task dependencies. A green bar at the bottom of the Gantt chart represents the project buffer.

A green callout box at the bottom left contains the text: "You can choose to keep the Project Buffer at 40 days or update the buffer size, giving the changes duration of the Critical Chain."

CCPM Project with buffers

Also project buffer has been updated

5

