

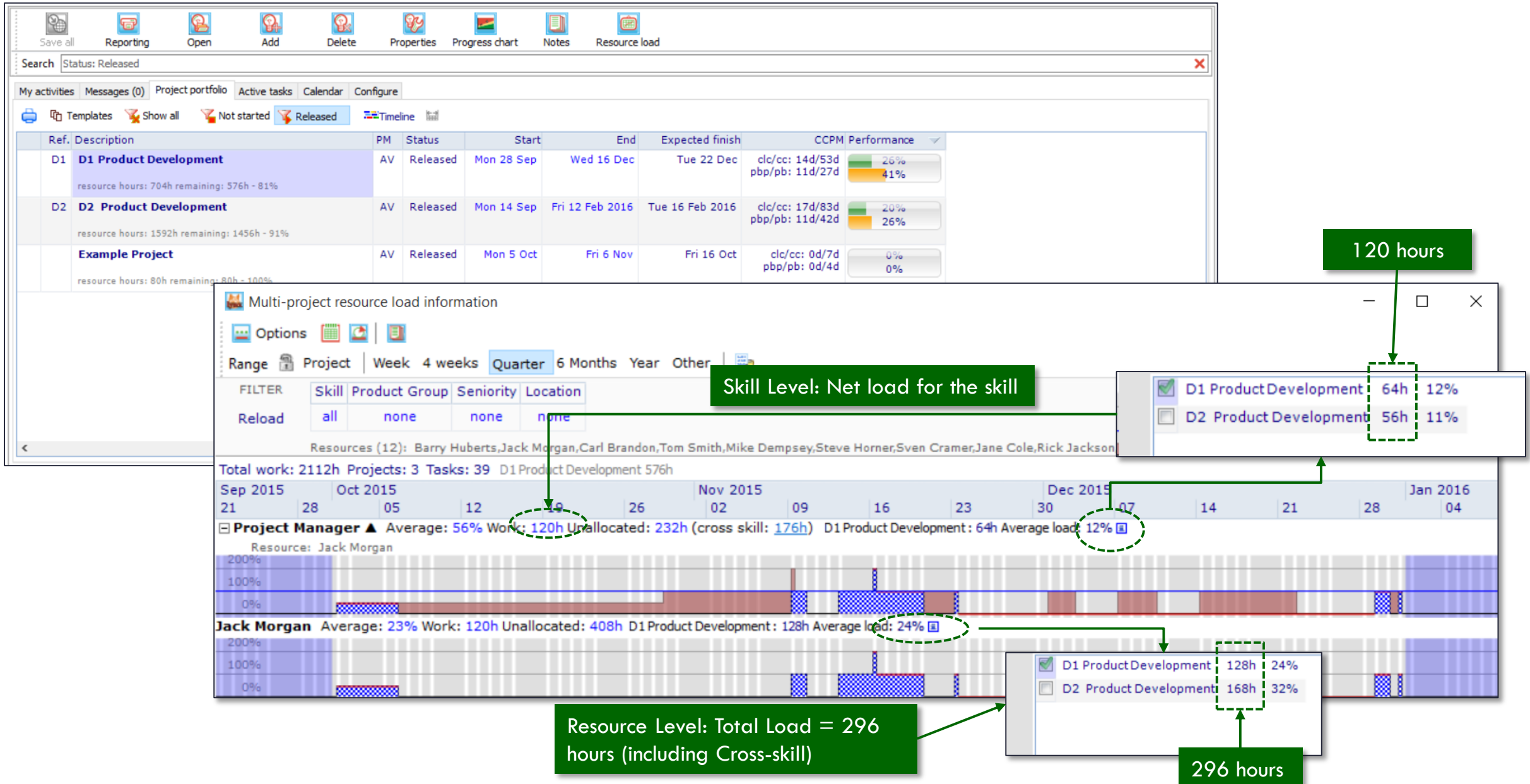
# GET STARTED WITH LYNX

Resource Load [i] information by skill and resource

**A-dato**

High Performance Delivered

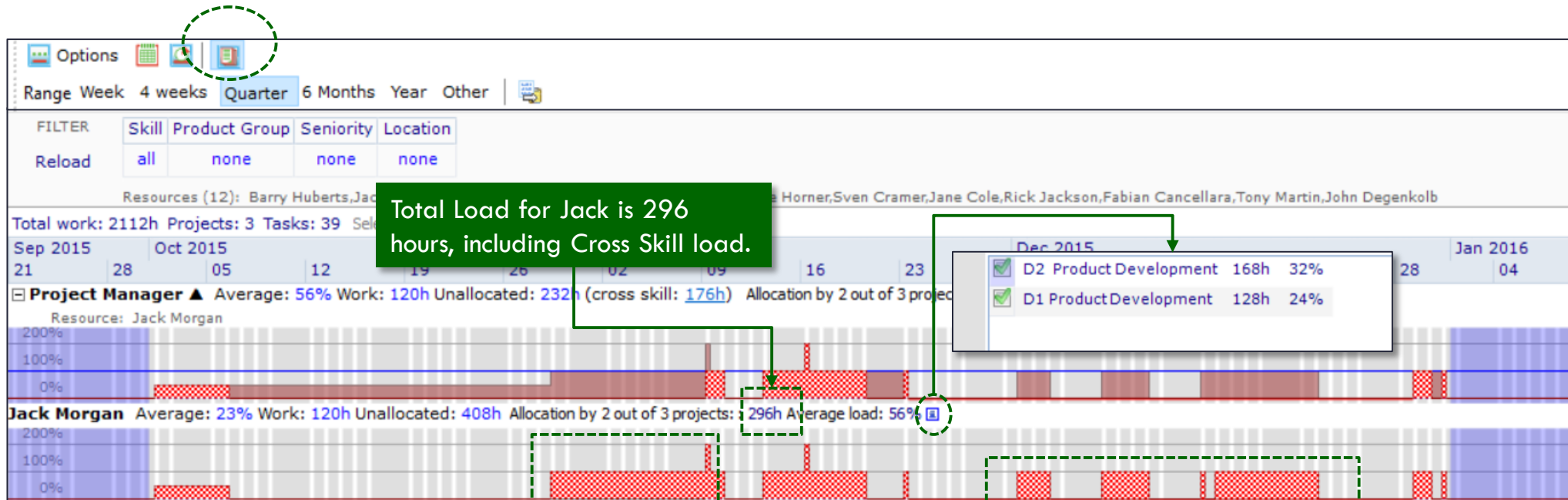
# Example with 3 Active Projects



# Resource Load for Selected Projects

Ref.	Description	PM	Status	Start	End	Expected finish	CCPM Performance
D1	<b>D1 Product Development</b>	AV	Released	Mon 28 Sep	Wed 16 Dec	Tue 22 Dec	clc/cc: 14d/53d pbp/pb: 11d/27d 26% 41%
D2	<b>D2 Product Development</b>	AV	Released	Mon 14 Sep	Fri 12 Feb 2016	Tue 16 Feb	
	<b>Example Project</b>	AV	Released	Mon 5 Oct	Fri 6 Nov	Fri 16 Oct	clc/cc: 0d/7d pbp/pb: 0d/4d 0% 0%

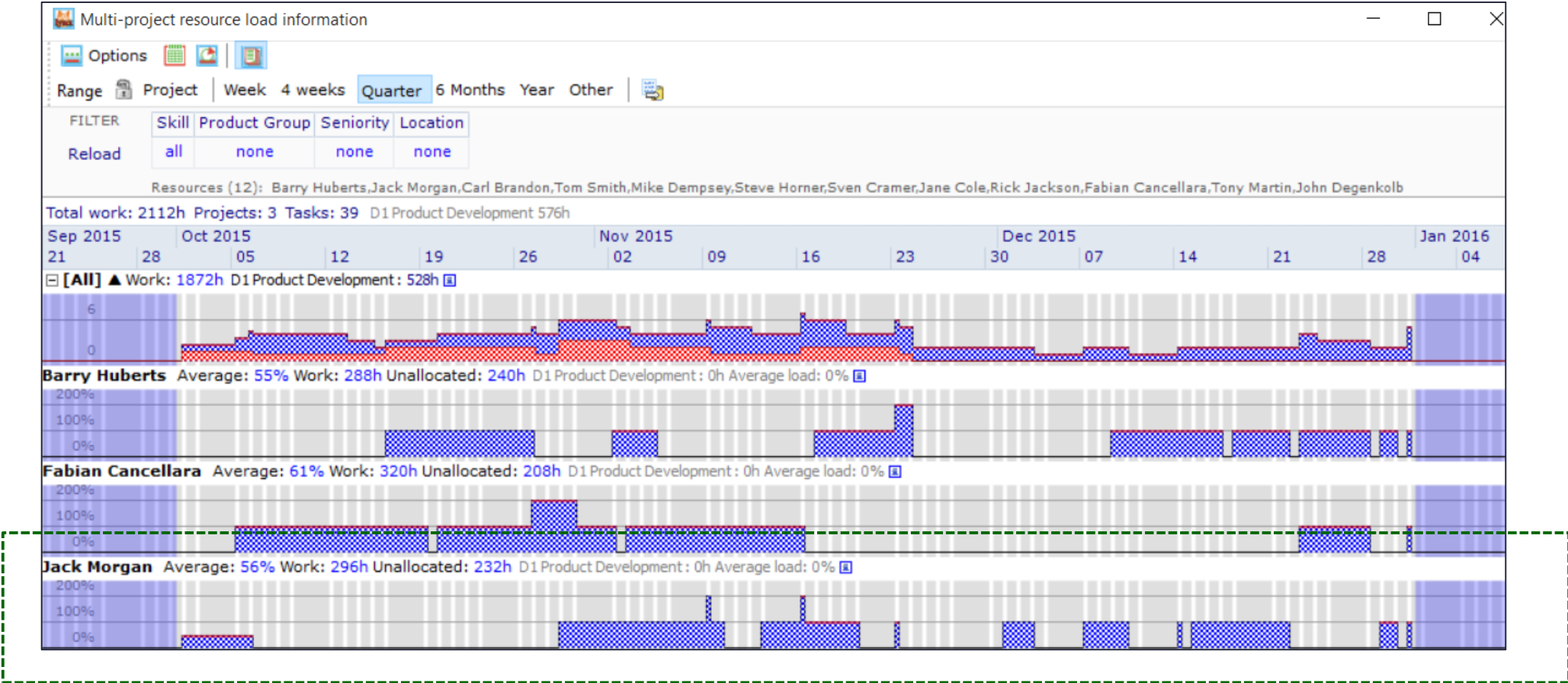
If all projects are selected LYNX will also display the Cross Skill Load on resource level.



Total Load for Jack is 296 hours, including Cross Skill load.

D2 Product Development 168h 32%  
 D1 Product Development 128h 24%

# [-] All Resource Load for Jack



Total Resource Load of Jack, for both skill (Project Manager and Trainer)